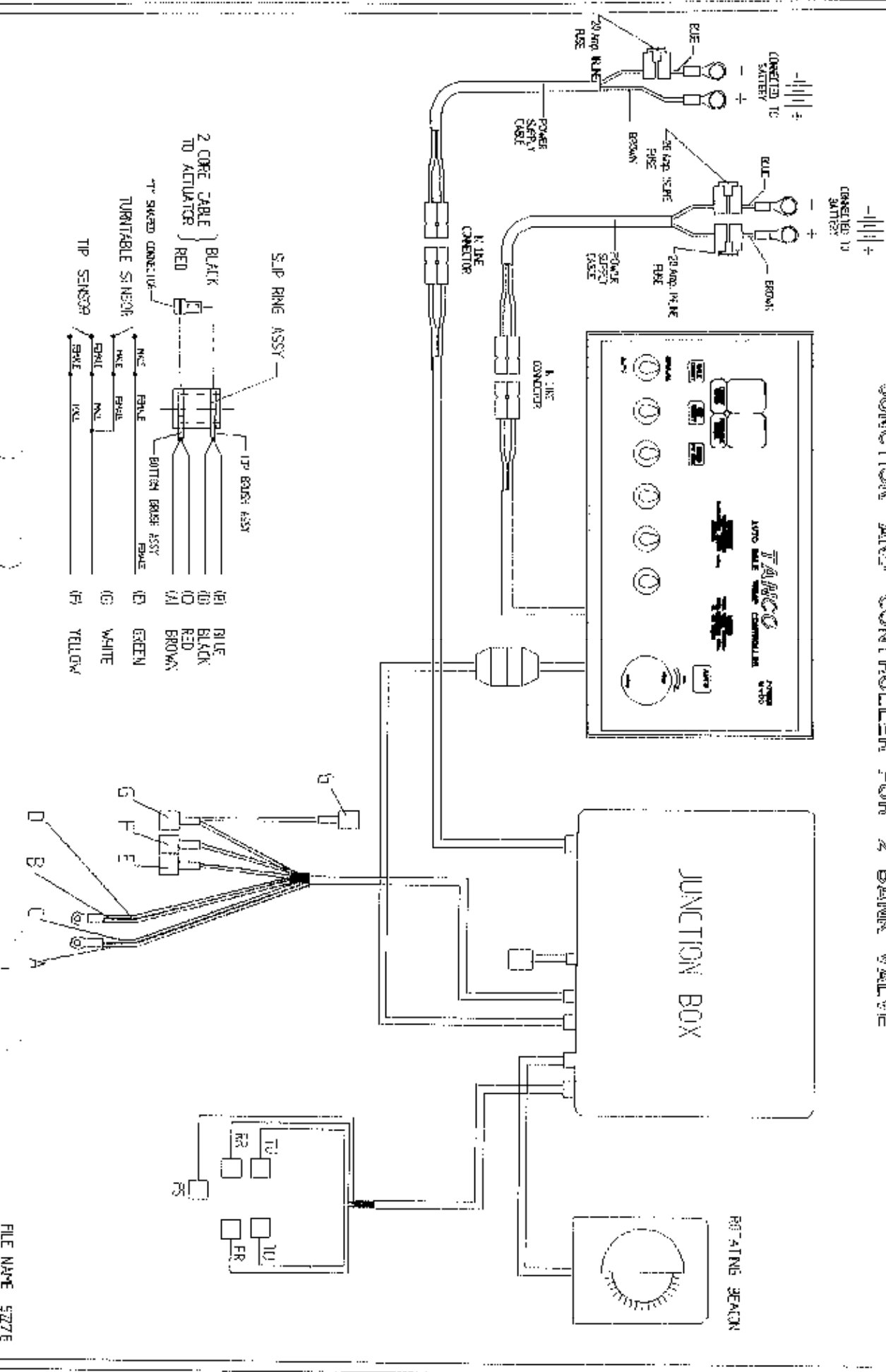


TANCO AUTOWRAP SYSTEMS
200 ARC MODEL 1993
OPERATORS HANDBOOK
AND
PARTS LIST
WE 65 - 0200 - M0993

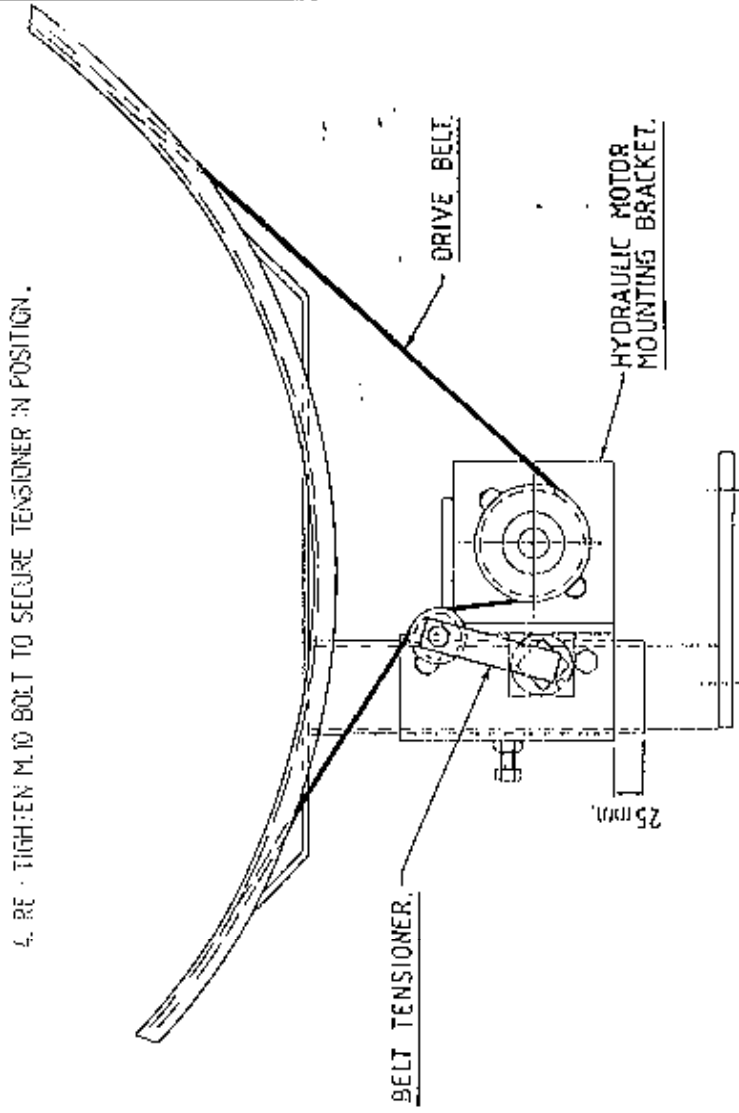
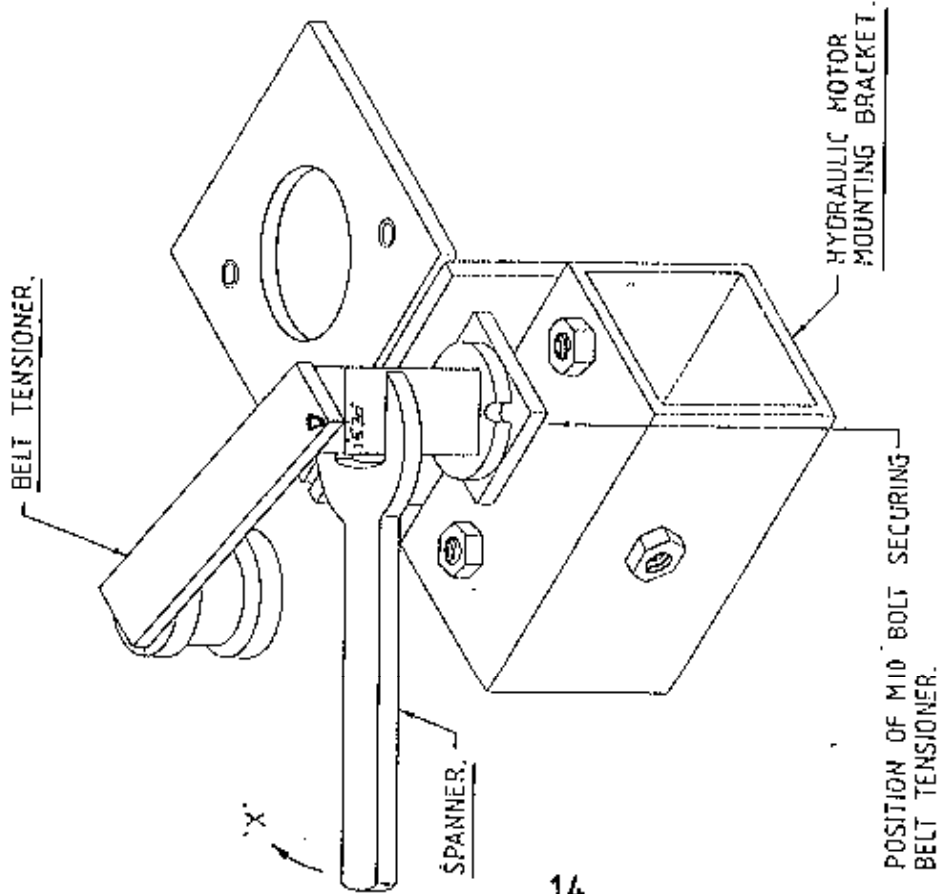
TANCO AUTOWRAP 200ARC/1050LRC/1250LRC MODELS JUNCTION AND CONTROLLER FOR 2 BANK VALVE



TANCO AUTOMATIC 993 DRIVE BELT TENSIONING SYSTEM.

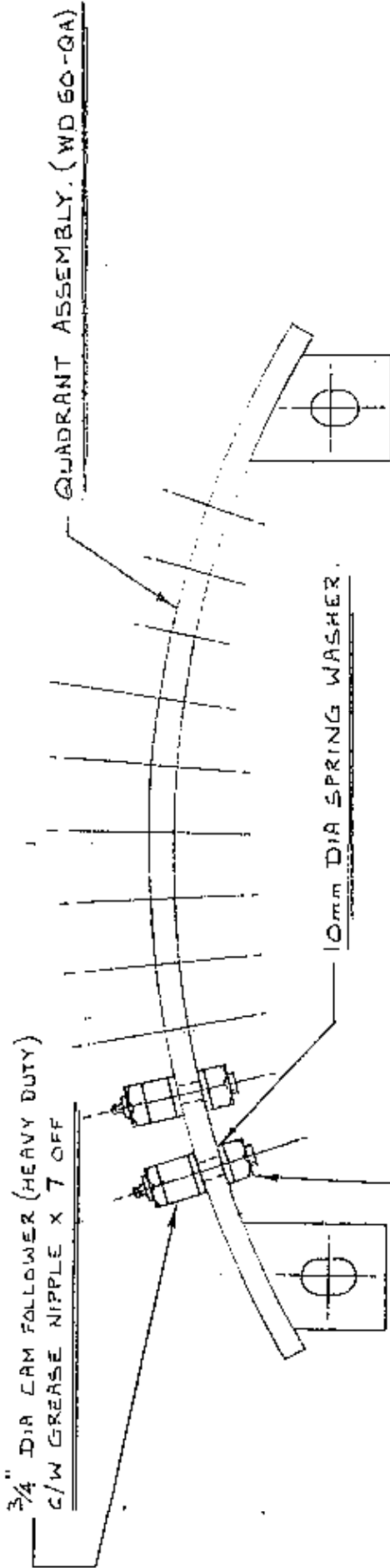
BELT TENSIONING PROCEDURE

1. CHECK THAT HYDRAULIC MOTOR MOUNTING BRACKET IS SECURED IN POSITION USING 25mm DIMENSION AS SHOWN.
2. LOOSEN M10 BOLT SECURING BELT TENSIONER.
3. TENSION BELT BY ADJUSTING TENSIONER USING SPANNER IN DIRECTION OF ARROW "X" UNTIL SETTING OF 25°-30° IS REACHED.
4. RE-TIGHTEN M10 BOLT TO SECURE TENSIONER IN POSITION.



NOTE :

WHEN FITTING $\frac{3}{4}$ " DIA CAM FOLLOWERS
TO QUADRANT ASSEMBLY IT IS NECESSARY
TO TORQUE NUTS TO 26 FT/LB.



$\frac{3}{8}$ " U.N.F. LOCKNUT (BINX)

10mm DIA SPRING WASHER.

PLAN VIEW OF QUADRANT ASSEMBLY.

NOTE :

ENSURE THAT M20 HEX HD BOLT X 110 mm
LONG USED TO MOUNT 4" DIA SUPPORT
WHEELS ON TURNABLE ASSEMBLY IS
POSITIONED WITH BOLT HEAD TO INSIDE
TO AVOID FOULING $\frac{3}{4}$ " DIA CAM
FOLLOWER.

TANCO AUTOWRAP (1993 MODEL)

QUADRANT ASSEMBLY INSTRUCTIONS.

BRAKE TIMING INSTRUCTIONS

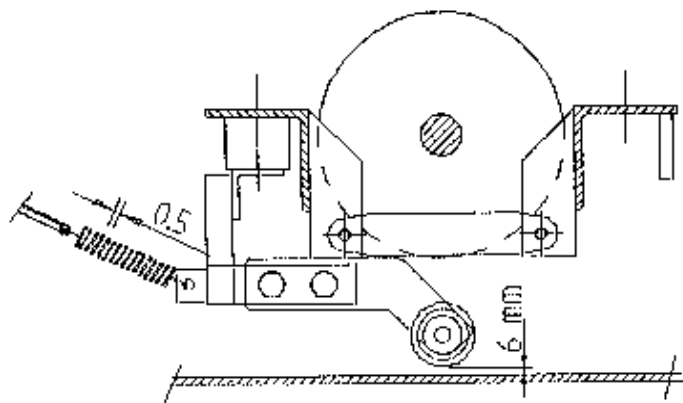


FIG 2

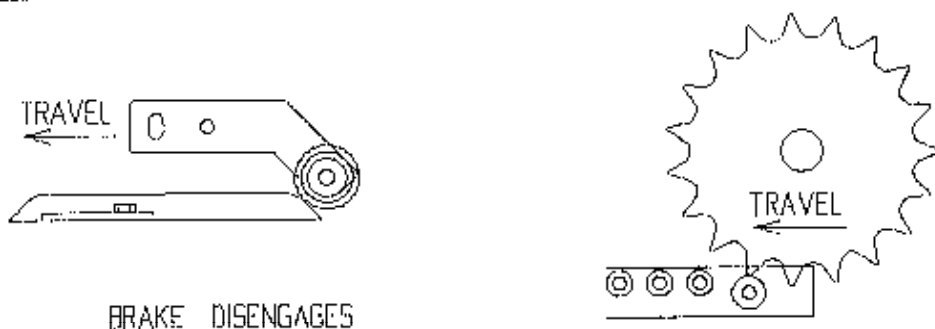


FIG 3

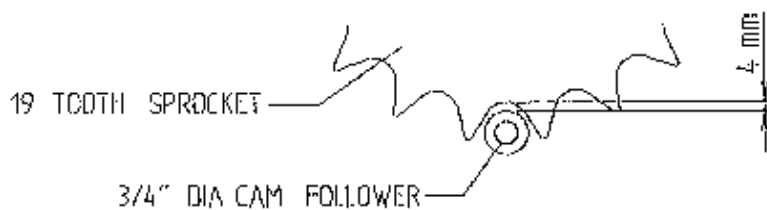


FIG 4

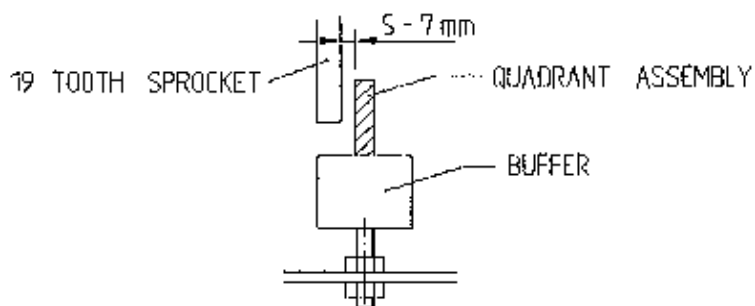


FIG 5

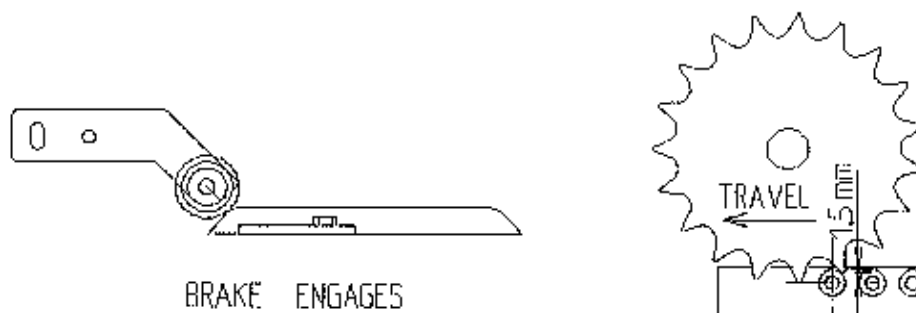
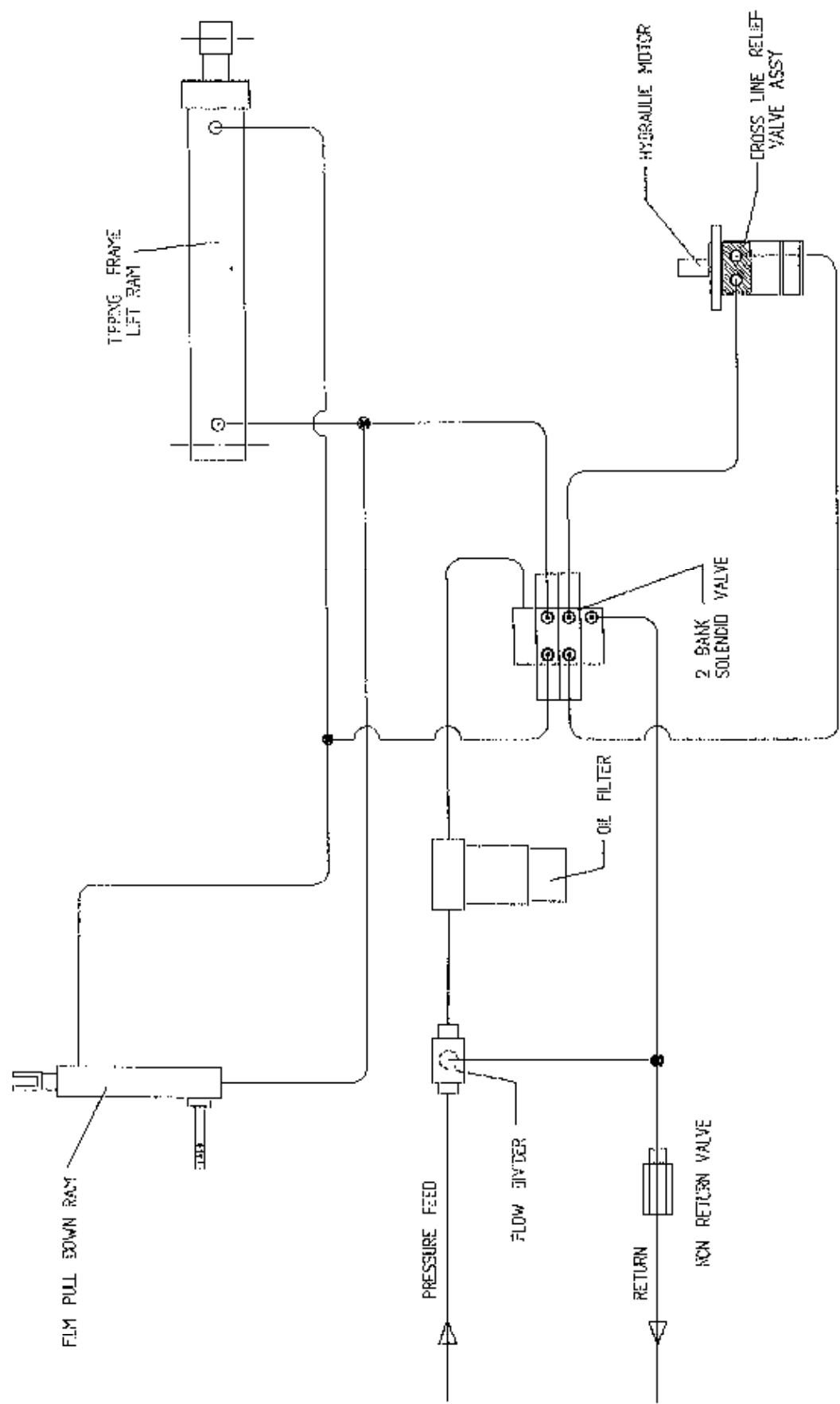
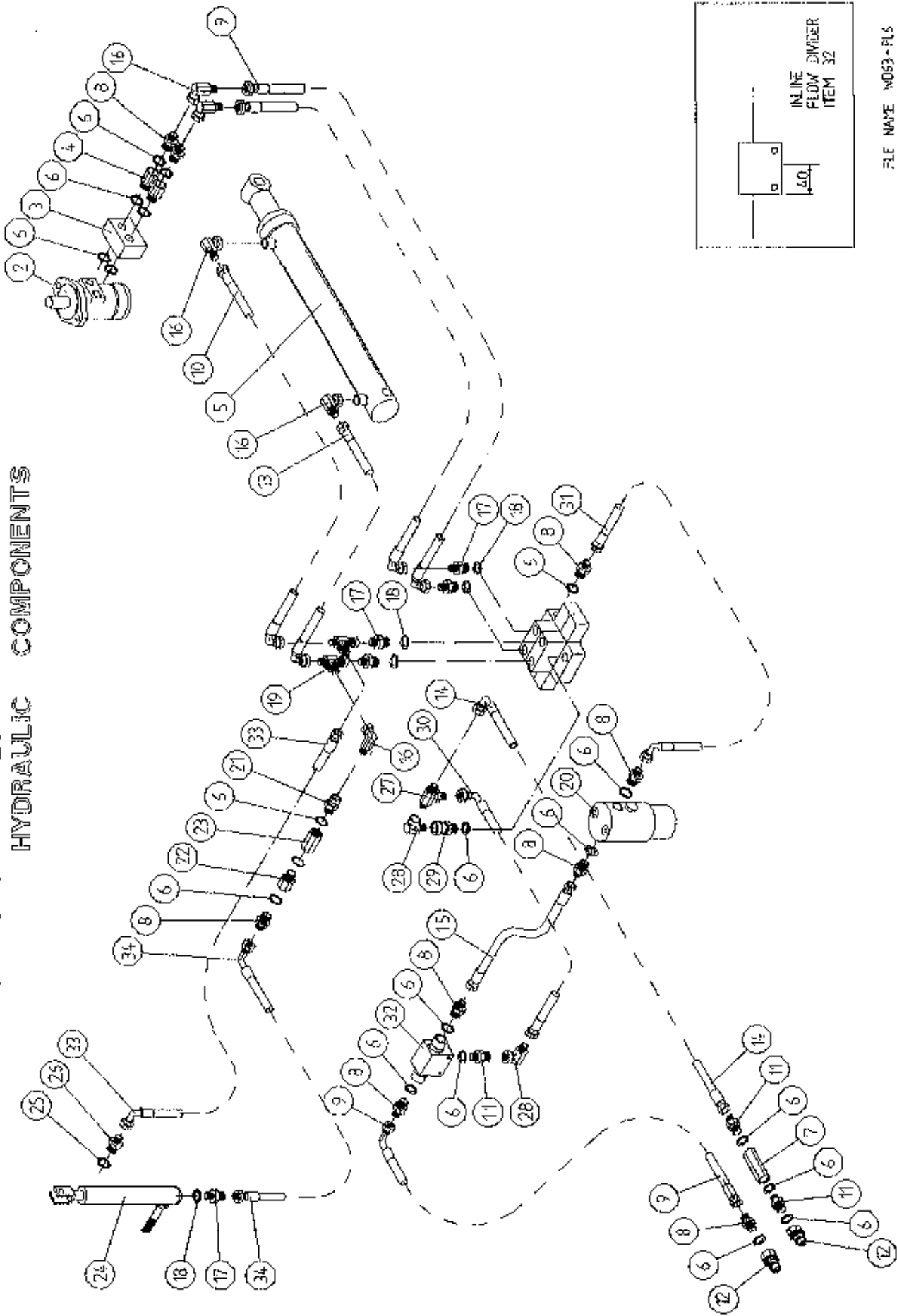


FIG 6

TANCO AUTOWRAP 200 ARC/1050 LRC/1250 LRC MODEL HYDRAULIC CIRCUIT DIAGRAM



TANCO AUTOWRAP 200 ARC/1050 LRC/1250 LRC MODEL
HYDRAULIC COMPONENTS



FILE NAME W063-PLS

TANCO AUTOWRAP 200 ARC/1050 LRC/1250 LRC MODELS

HYDRAULIC COMPONENTS

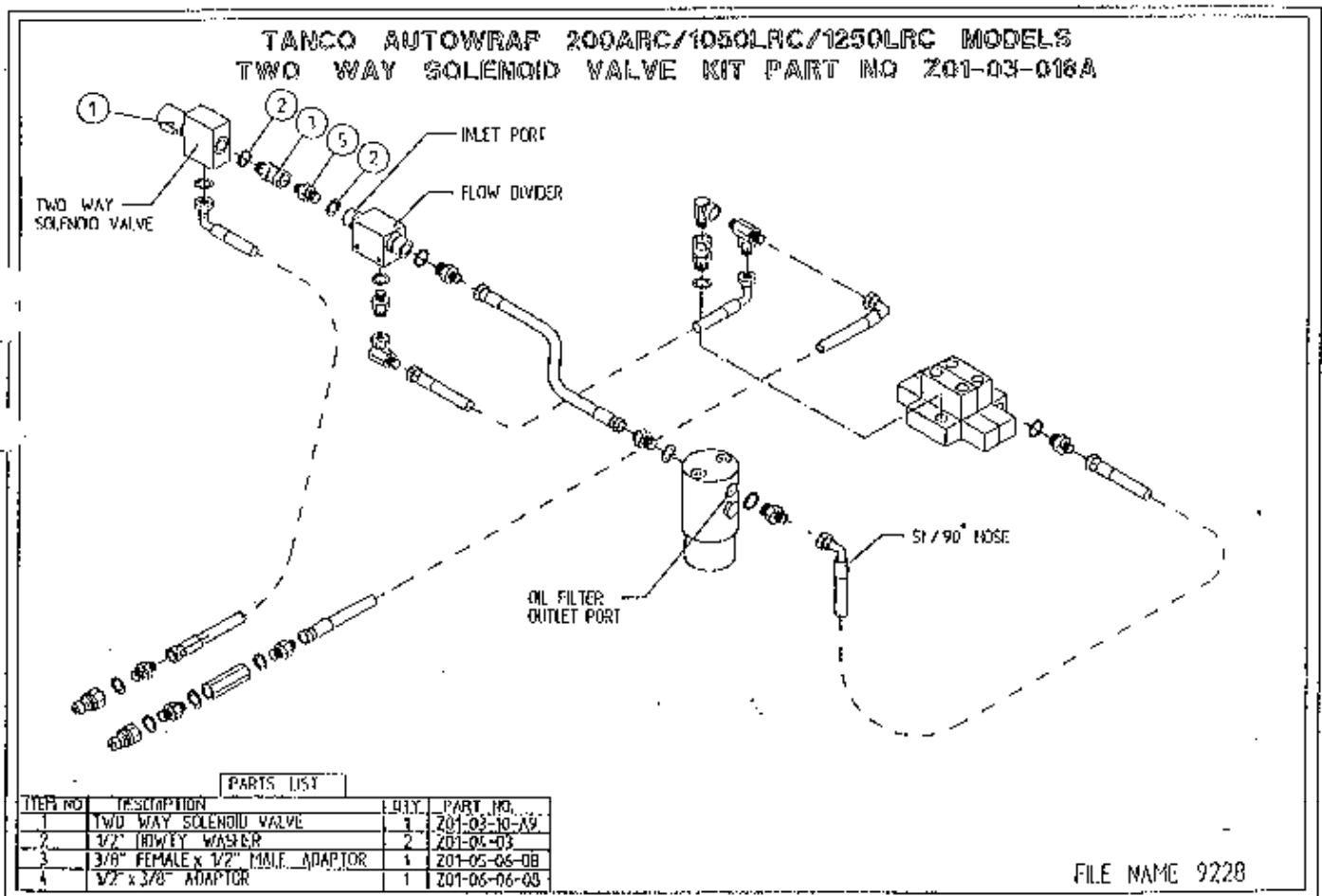
PARTS LIST

ITEM NO.	DESCRIPTION	QTY.	PART NO.
1	2 BANK SOLENOID VALVE	1	Z01-03-10-A2
2	HYDRAULIC MOTOR (C.L.)	1	Z01-02-AR75
3.	CROSS LINE RELIEF VALVE	1	Z01-03-002
4.	1/2" B.S.P. BOTTOM BANJO BOLT (SPECIAL)	2	Z01-18-081
5.	HYD. RAM (TIPPING FRAME)	1	Z01-01-AR607
6.	1/2" DOWTY WASHER	19	Z01-04-03
7.	1/2" NON RETURN VALVE	1	Z01-03-017
8.	1/2" x 3/8" ADAPTOR	9	Z01-06-06-08
9.	72" ST/90 3/8" D/W HOSE	3	Z38-LW-72-S9
10.	48" ST/90 3/8" D/W HOSE	1	Z28-R2-48-S9
11.	1/2" x 1/2" ADAPTOR	3	Z01-06-08-08
12.	1/2" MALE END Q/R COUPLING	2	Z01-15-081
13.	36" ST/90 3/8" D/W HOSE	1	Z38-R2-36-S9
14.	96" ST/90 1/2" D/W HOSE	1	Z12-R1-96-S9
15.	12" ST/ST 3/8" D/W HOSE	1	Z38-R2-30-S9
16.	3/8" MALE/FEMALE 90 ELBOW	5	Z04-14-01S
17.	3/8" x 3/8" ADAPTOR	5	Z01-06-06-06
18.	3/8" DOWTY WASHER	5	Z01-04-02
19.	3/8" MALE x 3/8" MALE x 3/8" FEMALE 'T' PIECE	2	Z01-12-002
20.	FILTER	1	Z01-24-08
21.	3/8" FEMALE x 1/2" MALE ADAPTOR	1	Z01-05-06-08
22.	0.060 RESTRICTOR	1	Z01-03-40
23.	1/2" FEMALE/FEMALE ADAPTOR	1	W160-120
24.	HYD RAM D/A (PULL DOWN ARM)	1	Z01-01-AW25
25.	1/4" DOWTY WASHER	1	Z01-04-01
26.	1/4" x 3/8" ADAPTOR	1	Z01-06-04-06
27.	1/2" MALE "T" PIECE	1	Z01-11-003
28.	1/2" MALE/FEMALE 90 ELBOW	2	Z01-14-016
29.	1/2" MALE x 1/2" FEMALE ADAPTOR	1	Z01-05-08-08
30.	36" ST/45 1/2" D/W HOSE	1	Z12-R2-36-S4
31.	30" ST/90 3/8" D/W HOSE	1	Z38-R2-30-S9
32.	IN LINE FLOW DIVIDER	1	Z01-03-10-A7
33.	96" ST/90 3/8" D/W HOSE	1	Z38-R2T-96-S9
34.	84" ST/90 3/8" D/W HOSE	1	Z38-R2T-84-S9

INSTRUCTIONS FOR FITTING TWO WAY SOLENOID VALVE TO TANCO AUTOWRAP MODELS 200ARC, 1050LRC, 1250LRC.

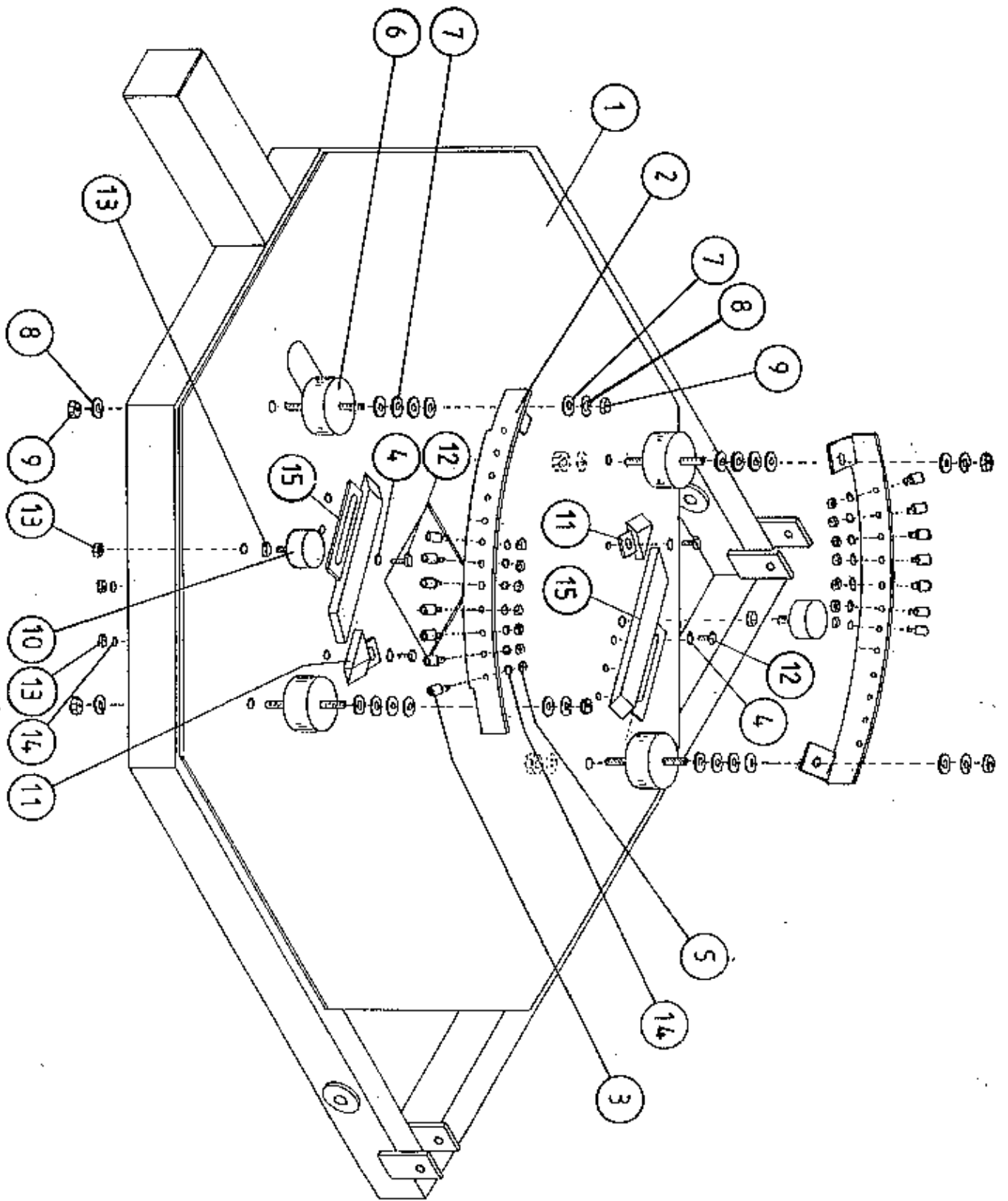
REQUIRED WHEN OPERATING MACHINES ON TRACTORS WITH CLOSED CENTRE HYDRAULIC SYSTEMS.

1. Disconnect St/90 hose from Inlet port on flow divider
2. Connect port "A" on solenoid valve assembly to inlet port on flow divider.
3. Reconnect St/90 hose to port "P" on solenoid valve.
4. Connect 2 pin female connector to existing 2 pin connector at junction box.
5. Ensure valve assembly does not foul any rotating parts.
6. Change the seventh controller function setting from n to J, See instruction manual for further information.



TANCO AUTOWRAP 1993

INDEXING QUADRANT ASSY (50% OVERLAP WITH 500mm WIDE FILM ROLL)



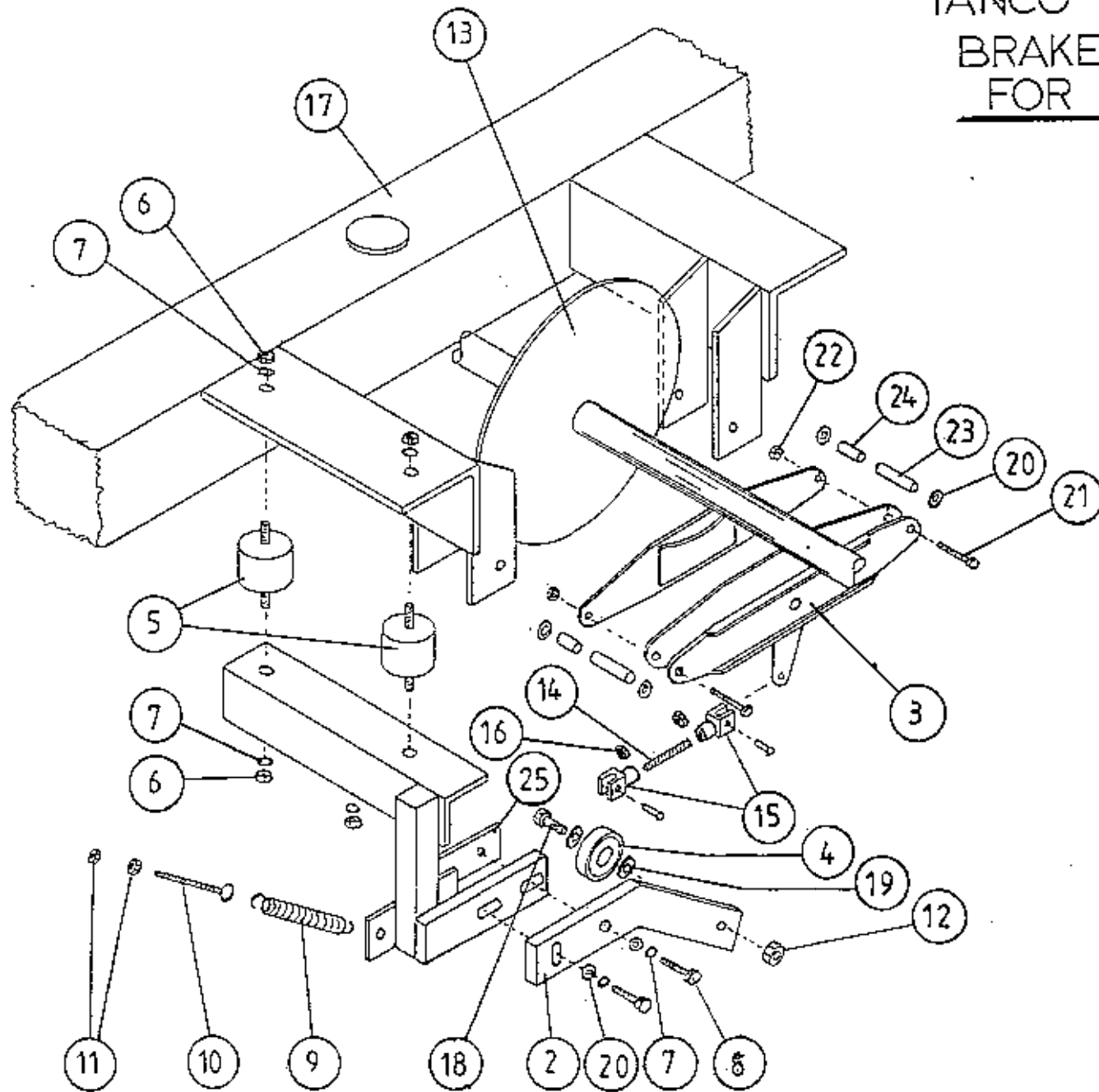
TANCO AUTOWRAP 1993

PARTS LIST

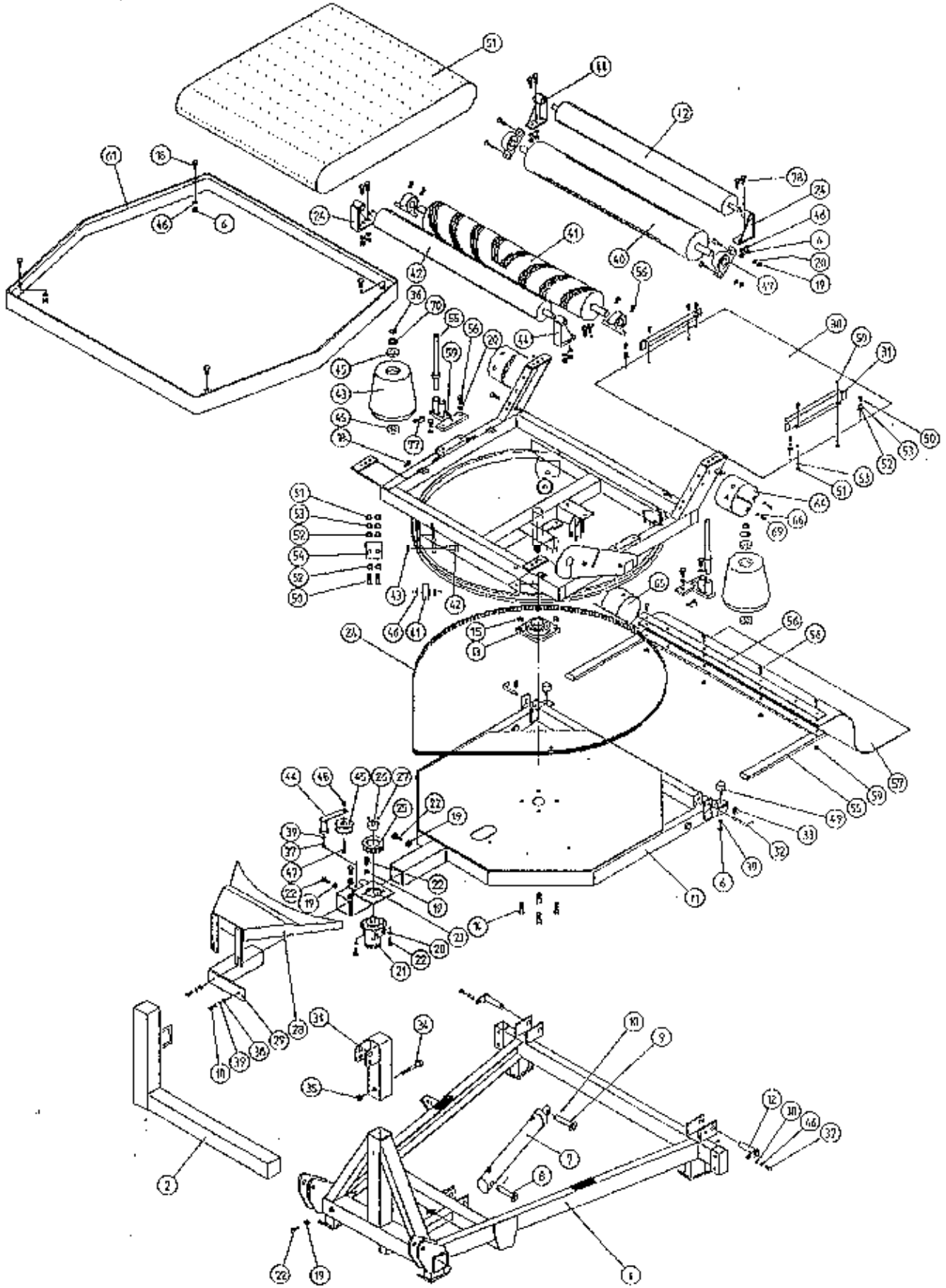
INDEXING QUADRANT ASSEMBLY (50% OVERLAP WITH 500MM WIDE FILM ROLL)

<u>ITEM NO.</u>	<u>DESCRIPTION</u>	<u>QTY.</u>	<u>PART NO</u>
1.	TIPPING FRAME ASSY.	1	UD69-FF
2.	QUADRANT ASSY.	1	RD39-QA
3.	3/4" DIA CAM FOLLOWER (HEAVY DUTY) C/W GREASE NIPPLE	14	206-425
4.	10mm DIA FLAT WASHERS	4	211-02-10
5.	3/8" UNF LOCKNUTS (BLKX)	14	229-13
6.	RUBBER BUFFER 100mm DIA x 40mm LONG	4	240-22
7.	16mm DIA FLAT WASHERS	28	219-02-16
8.	16mm DIA SPRING WASHERS	8	212-02-16
9.	M16 HEX NUT	8	218-16
10.	RUBBER BUFFER 50mm DIA x 25mm LONG	2	240-23
11.	CAM ASSY (SHORT)	2	UD623-CAS
12.	M10 HEX HD SET x 30mm LONG	4	226-062S
13.	M10 HEX NUT	3	218-10
14.	10mm DIA SPRING WASHER	13	212-02-10
15.	CAM ASSY (LONG)	2	UD623-CAL

TANCO AUTOWRAP 1993 BRAKE ARRANGEMENT FOR INDEXING SHAFT



TANCO AUTOWRAP 200 ARC MODEL 1993



TANCO AUTOWRAP 200ARC MODEL (3pt. LINKAGE) 1993

PARTS LIST

<u>ITEM NO.</u>	<u>DESCRIPTION</u>	<u>QTY.</u>	<u>PART NO.</u>
1.	3pt. LINKAGE FRAME ASSEMBLY	1	WD63-MF
2.	DISPENSER BRACKET LOWER SUPPORT	1	WD63-DMLB
3.	RUBBER MAT MOUNTING FRAME ASSEMBLY	1	WD63-MMF
4.	RUBBER MAT	1	Z05-02AWH
5.	CLAMPING PLATE	1	WD63-1300
6.	M10 HEX NUT	18	Z18-10
7.	HYD. RAM	1	Z01-01-AR687
8.	RAM BOTTOM PIVOT PIN	1	Z03-02-330
9.	RAM TOP PIVOT PIN	1	Z03-03-50
10.	2" X 1/4" SPLIT PIN	2	Z03-21-29
11.	TIPPING FRAME ASSY.	1	WD60-TF
12.	TIPPING FRAME PIVOT PIN C/W GREASE NIPPLE	2	Z03-01-905 Z39-60
13.	2" DIA FLANGE BEARING	1	Z06-49
14.	5/8" UNF HEX HD SET x 2" LONG	4	Z30B-064B
15.	5/8" UNF LOCKNUTS	4	Z20-10
18.	M10 HEX HD SET x 30mm LONG	10	Z26-0625
19.	M12 HEX NUT	13	Z18-12
20.	12mm DIA SPRING WASHER	14	Z12-02-12
21.	HYD. MOTOR C.L.	1	Z01-02-AR75
22.	M12 HEX HD SETS x 30mm LONG	7	Z26-0825
23.	HYD. MOTOR MOUNTING ASSY.	1	WD60-HMB
24.	ROLLER MOUNTING BRACKET	2	WD60-TRMBL
25.	4"DIA x 1/2" PITCH TOOTHED PULLEY	1	Z09-005-AW1
26.	TAPER LOCK BUSH TO SUIT 1" DIA SHAFT	1	Z09-005-AW2
27.	M10 STUDS x 15mm	2	Z28-01
28.	HYD. MOTOR GUARD ASSY	1	WD60-HMG
29.	HYDRAULIC MOTOR GUARD MOUNTING BRACKET	1	WD60-HAMB
30.	M8 HEX HD SET x 25mm LONG	4	Z26-040S
31.	TOP LINK BRACKET ASSEMBLY	1	WD63-TLB
32.	BISSEL PIN	2	Z03-22-AW100
33.	4mm "R" CLIP	2	Z36-02

2

3

4

5

6

TANCO AUTOWRAP 200 MODEL (3pt. LINKAGE) 1993

PARTS LIST

<u>ITEM NO.</u>	<u>DESCRIPTION</u>	<u>QTY.</u>	<u>PART NO.</u>
34.	M16 HEX HD BOLT x 120mm LONG	1	Z26-134B
35.	M16 LOCKNUTS	1	Z23-16
36.	CIRCLIP	2	Z29-75
37.	M10 HEX HD. SET x 25mm LONG (TUPLOCK)	3	Z26S-061
38.	10mm DIA MACHINED FLAT WASHER	4	Z11-02-10
39.	TURN TABLE ASSY.	1	WD60-TA
40.	BIG ROLLER ASSY IDLER	1	WD60-BRI
41.	BIG ROLLER ASSY. DRIVER	1	WD60-BRD
42.	SMALL ROLLER ASSY.	2	WD60-SMR
43.	SIDE ROLLER	2	Z06-AWR
44.	ROLLER MTG. BRACKET	2	WD60-TRMBR
45.	BEARING (25mm I.D.)	4	Z06-433
46.	10mm DIA SPRING WASHERS	23	Z12-02-10
47.	1 1/4" PILLOW BLOCK BEARING C/W CAM LOCK COLLAR	4	Z06-485
48.	SUPPORT WHEELS (4" DIA)	4	Z06-466
49.	AXLE ASSY. C/W GREASE NIPPLE	4	Z03-22-AW/AX Z39-60
50.	M20 LOCKNUTS	4	Z23-20
51.	1 METER WIDE x 89 1/2" LONG x 1/4" FLAT BELT	1	Z05-02-AWV
52.	TURN TABLE COVER PLATE	1	WD60-093
53.	BELT GUIDE ASSY.	2	WD625-BG
54.	8 LOCKNUTS	4	Z23-08
55.	ROLLER SHAFT ASSEMBLY	2	WD60-RSA
56.	M12 HEX HD. SETS x 40mm LONG	12	Z26S-084
57.	SPACER	8	WD60-198
58.	1/8" B.S.P. ST GREASE NIPPLE	4	Z39-60
59.	END ROLLER MOUNTING BRACKET	2	WD60-ERM
60.	ROSTA TENSIONING UNIT ARM	1	Z06-454
61.	MAIN GUARD ASSY.	1	WD60-MG
62.	170" LONG x 1/2 PITCH x 1" WIDE TOOTHED BELT	1	Z05-02-AW2
63.	STEPPED ROLLER C/W BEARINGS	1	Z06-456

2

2

2

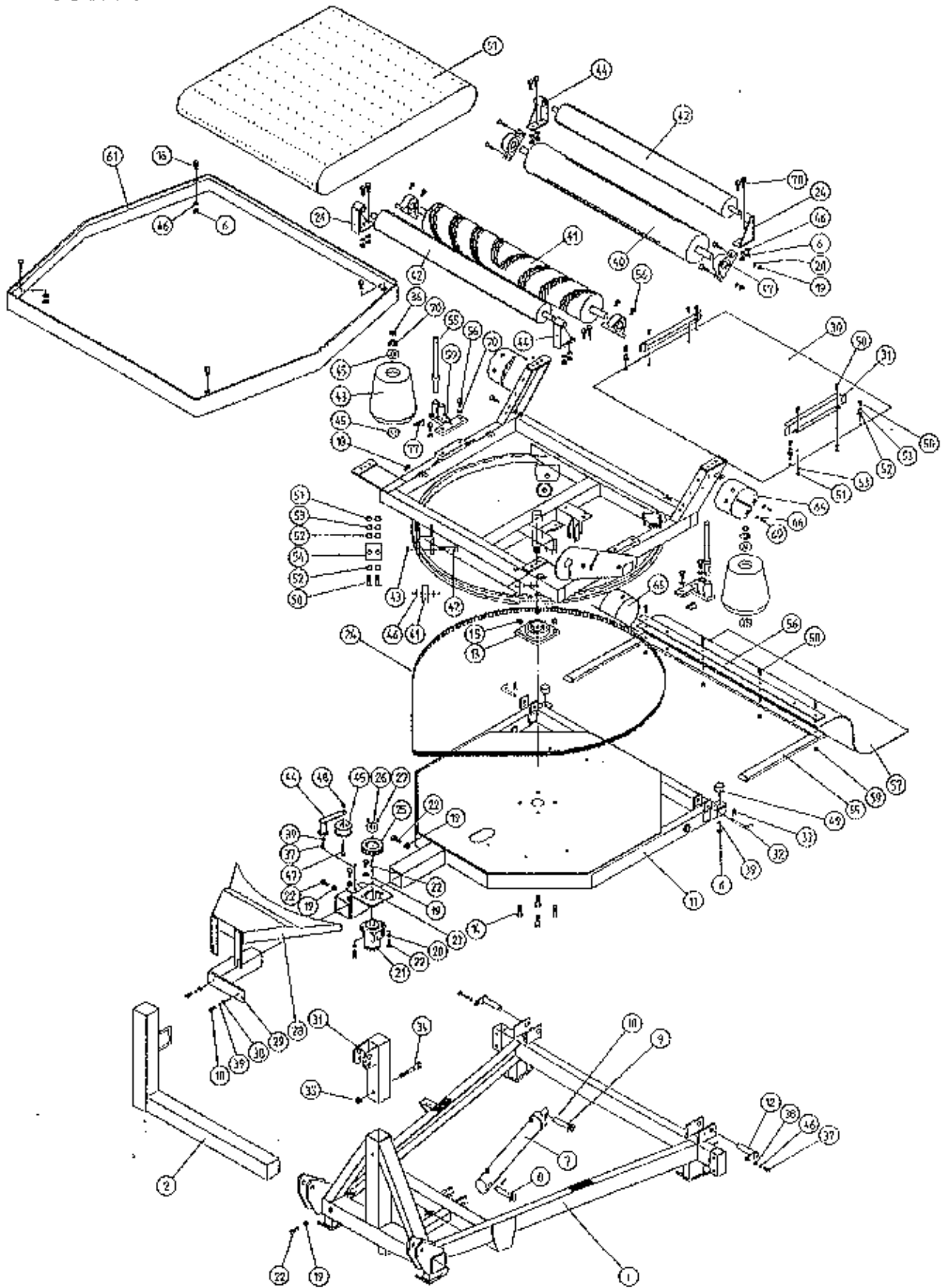
2

TANCO AUTOWRAP 200 MODEL (3pt. LINKAGE) 1993

PARTS LIST

<u>ITEM NO.</u>	<u>DESCRIPTION</u>	<u>QTY.</u>	<u>PART NO.</u>
64.	GRASS GUARD (CLOSED TYPE)	3	Z49-98
65.	GRASS GUARD (OPEN TYPE)	1	Z49-981
66.	M8 HEX HD SETS x 20mm LONG	20	Z26-039S
67.	M8 HEX NUTS	14	Z18-08
68.	8mm DIA FLAT WASHERS (MUD FLAP)	20	Z11-02-081
69.	8mm DIA SPRING WASHERS	20	Z12-02-08
70.	THRUST WASHER	2	WD60-292
71.	SCRAPER	2	WD60-705
74.	SPACER	1	Z18-12
75.	M10 HEX HD BOLT x 60mm LONG	1	Z26-067B
76.	M10 LOCKNUT	1	Z23-10
77.	10mm "D" LINCH PIN	2	Z38-03
78.	M10 HEX HD SET x 35mm LONG	8	Z26-063S
79.	BUFFER 56mm DIA x 40mm LONG	2	Z40-20
80.	1 1/4" UNC HEX NUT	1	Z18-300
81.	M8 Grub Screw	1	Z28-066

TANCO AUTOWRAP 200 ARC MODEL 1993



TANCO AUTOWRAP 200ARC MODEL (3pt. LINKAGE) 1993

PARTS LIST

<u>ITEM NO.</u>	<u>DESCRIPTION</u>	<u>QTY.</u>	<u>PART NO.</u>
1.	3pt. LINKAGE FRAME ASSEMBLY	1	WD63-MF
2.	DISPENSER BRACKET LOWER SUPPORT	1	WD63-DMLH
3.	RUBBER MAT MOUNTING FRAME ASSEMBLY	1	WD63-NMF
4.	RUBBER MAT	1	Z05-02AWM
5.	CLAMPING PLATE	1	WD63-1300
6.	M10 HEX NUT	10	Z18-10
7.	HYD. RAM	1	Z01-01-AR687
8.	RAM BOTTOM PIVOT PIN	1	Z03-02-330
9.	RAM TOP PIVOT PIN	1	Z03-03-50
10.	2" X 1/4" SPLIT PIN	2	Z03-21-29
11.	TIPPING FRAME ASSY.	1	WD60-7F
12.	TIPPING FRAME PIVOT PIN C/W GREASE NIPPLE	2	Z03-01-905 Z39-60
13.	2" DIA FLANGE BEARING	1	Z06-49
14.	5/8" UNF HEX HD SET x 2" LONG	4	Z30B-064B
15.	5/8" UNF LOCKNUTS	4	Z20-10
18.	M10 HEX HD SET x 30mm LONG	10	Z26-0625
19.	M12 HEX NUT	13	Z18-12
20.	12mm DIA SPRING WASHER	14	Z12-02-12
21.	HYD.MOTOR C.L.	1	Z01-02-AR75
22.	M12 HEX HD SETS x 30mm LONG	7	Z26-0825
23.	HYD. MOTOR MOUNTING ASSY.	1	WD60-HMB
24.	ROLLER MOUNTING BRACKET	2	WD60-TRMBL
25.	4"DIA x 1/2" PITCH TOOTHED PULLEY	1	Z09-005-AW1
26.	TAPER LOCK BUSH TO SUIT 1" DIA SHAFT	1	Z09-005-AW2
27.	M10 STUDS X 15mm	2	Z28-01
28.	HYD. MOTOR GUARD ASSY	1	WD60-HMG
29.	HYDRAULIC MOTOR GUARD MOUNTING BRACKET	1	WD60-HAMB
30.	M8 HEX HD SET x 25mm LONG	4	Z26-0405
31.	TOP LINK BRACKET ASSEMBLY	1	WD63-TLB
32.	BISSEL PIN	2	Z03-22-AW100
33.	4mm "R" CLIP	2	Z36-02

TANCO AUTOWRAP 200 MODEL (3pt. LINKAGE) 1993

PARTS LIST

<u>ITEM NO.</u>	<u>DESCRIPTION</u>	<u>QTY.</u>	<u>PART NO.</u>
34.	M16 HEX HD BOLT x 120mm LONG	1	Z26-134B
35.	M16 LOCKNUTS	1	Z23-16
36.	CIRCLIP	2	Z29-75
37.	M10 HEX HD. SET x 25mm LONG (TUFLOXK)	3	Z26S-061
38.	10mm DIA MACHINED FLAT WASHER	4	Z11-02-10
39.	TURN TABLE ASSY.	1	WD60-TA
40.	BIG ROLLER ASSY IDLER	1	WD60-BRT
41.	BIG ROLLER ASSY. DRIVER	1	WD60-BRD
42.	SMALL ROLLER ASSY.	2	WD60-SMR
43.	SIDE ROLLER	2	Z06-AWR
44.	ROLLER MTG. BRACKET	2	WD60-TRMBR
45.	BEARING (25mm I.D.)	4	Z06-433
46.	10mm DIA SPRING WASHERS	23	Z12-02-10
47.	1 1/4" PILLOW BLOCK BEARING C/W CAM LOCK COLLAR	4	Z06-4B5
48.	SUPPORT WHEELS (4" DIA)	4	Z06-466
49.	AXLE ASSY. C/W GREASE NIPPLE	4	Z03-22-AW/AX Z39-60
50.	M20 LOCKNUTS	4	Z23-20
51.	1 METER WIDE x 89 1/2" LONG x 1/4" FLAT BELT	1	Z05-02-AWV
52.	TURN TABLE COVER PLATE	1	WD60-093
53.	BELT GUIDE ASSY.	2	WD625-BG
54.	8 LOCKNUTS	4	Z23-08
55.	ROLLER SHAFT ASSEMBLY	2	WD60-RSA
56.	M12 HEX HD. SETS x 40mm LONG	12	Z26S-0B4
57.	SPACER	8	WD60-198
58.	1/8" B.S.P. ST GREASE NIPPLE	4	Z39-60
59.	END ROLLER MOUNTING BRACKET	2	WD60-ERM
60.	ROSTA TENSIONING UNIT ARM	1	Z06-454
61.	MAIN GUARD ASSY.	1	WD60-MG
62.	170" LONG x 1/2 PITCH x 1" WIDE TOOTHED BELT	1	Z05-02-AW2
63.	STEPPED ROLLER C/W BEARINGS	1	Z06-456

2. 2)

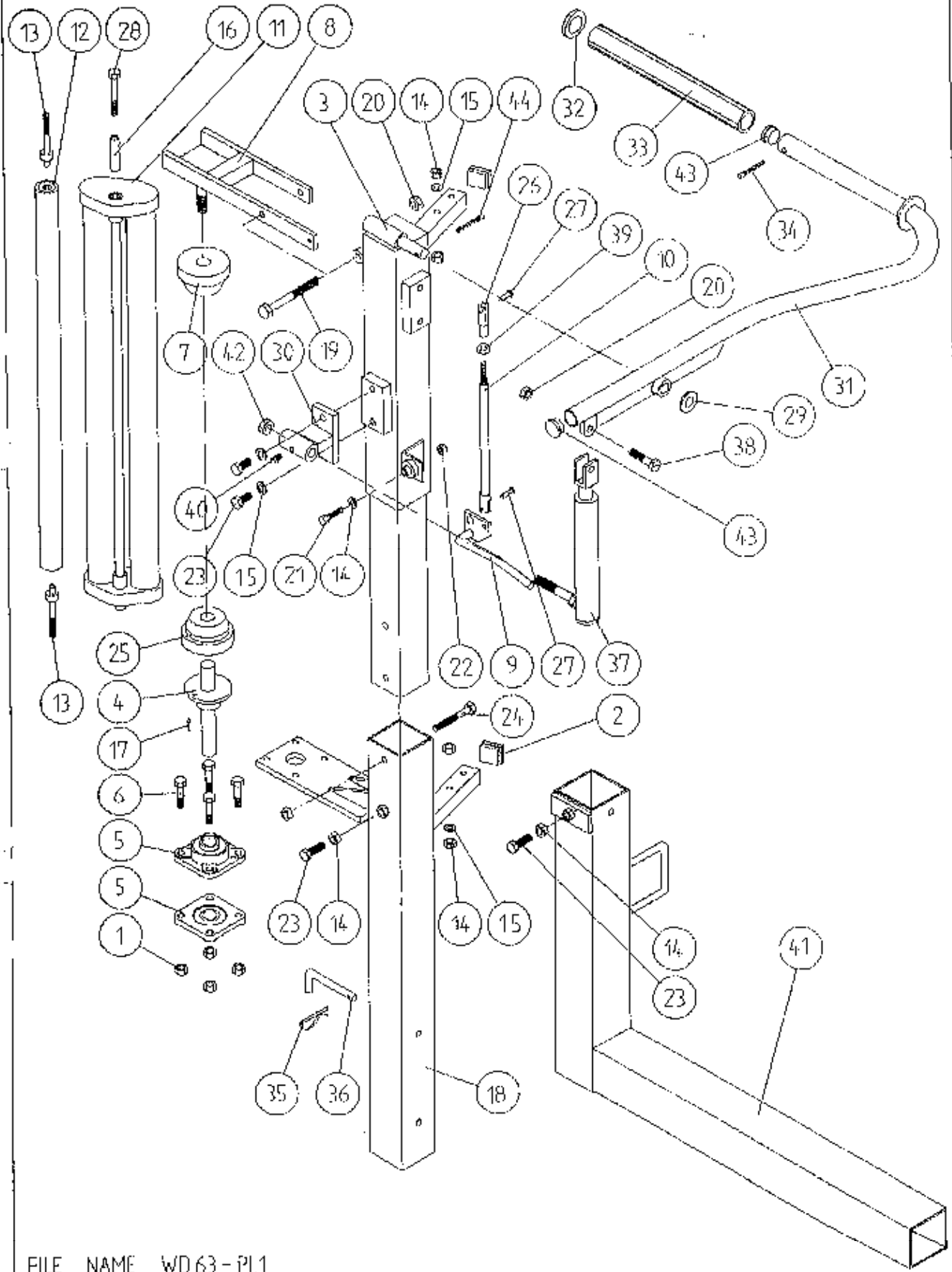
2. 2)

TANCO AUTOWRAP 200 MODEL (3pt. LINKAGE) 1993

PARTS LIST

<u>ITEM NO.</u>	<u>DESCRIPTION</u>	<u>QTY.</u>	<u>PART NO.</u>
64.	GRASS GUARD (CLOSED TYPE)	3	Z49-98
65.	GRASS GUARD (OPEN TYPE)	1	Z49-981
66.	M8 HEX HD SETS x 20mm LONG	20	Z26-039S
67.	M8 HEX NUTS	14	Z18-08
68.	8mm DIA FLAT WASHERS (MUD FLAP)	20	Z11-02-081
69.	8mm DIA SPRING WASHERS	20	Z12-02-08
70.	THRUST WASHER	2	WD60-292
71.	SCRAPER	2	WD60-705
74.	SPACER	1	Z18-12
75.	M10 HEX HD BOLT x 60mm LONG	1	Z26-067D
76.	M10 LOCKNUT	1	Z23-10
77.	10mm "D" LUNCH PIN	2	Z38-03
78.	M10 HEX HD SET x 35mm LONG	8	Z26-063S
79.	BUFFER 56mm DIA x 40mm LONG	2	Z40-20
80.	1 1/4" UNC HEX NUT	1	Z18-300
81.	M8 Grub Screw	1	Z28-066

TANCO AUTOWRAP 200 ARC MODEL 1993
FILM DISPENSOR SYSTEM



FILE NAME WD 63 - P1.1

TANCO AUTOWRAP 200 ARC 1992FILM DISPENSING SYSTEMPARTS LIST

<u>ITEM NO.</u>	<u>DESCRIPTION</u>	<u>QTY.</u>	<u>PART NO.</u>
1.	M10 LOCKNUTS	4	Z23-10
2.	PLASTIC CAPS (TO SUIT 40 x 40 x 3 RHS)	4	Z32-07
3.	DISPENSER MOUNTING (UPPER)	1	WD60-DMUM
4.	FILM SPOOL ASSEMBLY	1	WD60-SPO
5.	1" DIA FLANGE BEARING	2	Z06-48
6.	M10 HEX HD. BOLT x 50mm LONG	4	Z26-066B
7.	CONE (TOP) C/W BALL BEARINGS	1	Z06-45-01
8.	CLAMP ASSEMBLY	1	WD60-DMCA
9.	LEVER ASSEMBLY	1	WD60-DMLA
10.	LINK ASSEMBLY	1	WD60-DMLK
11.	FILM DISPENSER UNIT MK 6	1	D613
12.	SLAVE ROLLER ASSY (PLASTIC COATED)	1	WD60-SLR
13.	SLAVE ROLLER PIVOT	2	WD60-253
14.	M12 HEX NUTS	7	Z18-12
15.	12mm DIA SPRING WASHER	2	Z12-02-12
16.	SLEEVE	1	
17.	1/4" DIA TENSION PIN x 3/4" LONG	1	Z03-20-062
18.	DISPENSER MOUNTING (LOWER)	1	WD60-DMLM
19.	M12 HEX HD BOLT x 130mm LONG	1	Z26-094B
20.	M12 LOCKNUT	3	Z23-12
21.	M8 HEX HD BOLT x 35mm LONG	1	Z26-042S
22.	M8 LOCKNUT	1	Z23-08
23.	M12 HEX HD SET x 30mm LONG	3	Z26-082S
24.	M12 HEX HD BOLT x 100mm LONG	1	Z26-092B
25.	CONE (BOTTOM)	1	Z06-45-02
26.	CLEVIS (M10)	1	Z49-336
27.	PIN (5/16" DIA) C/W CLIP	2	Z49-337
28.	M10 HEX HD. BOLT X 80MM LONG	1	Z26-0691B
29.	3/4" DIA FLAT WASHER	1	Z10-02-19
30.	FILM PULL DOWN BRACKET ASSY	1	WD65-FPDB
31.	FILM PULL DOWN ARM ASSY	1	WD65-FPDA
32.	RETAINING WASHER	1	WD60-859
33.	Roller	1	WD60-866
34.	2" x 1/4" SPLIT PIN	1	Z01-23-29

2

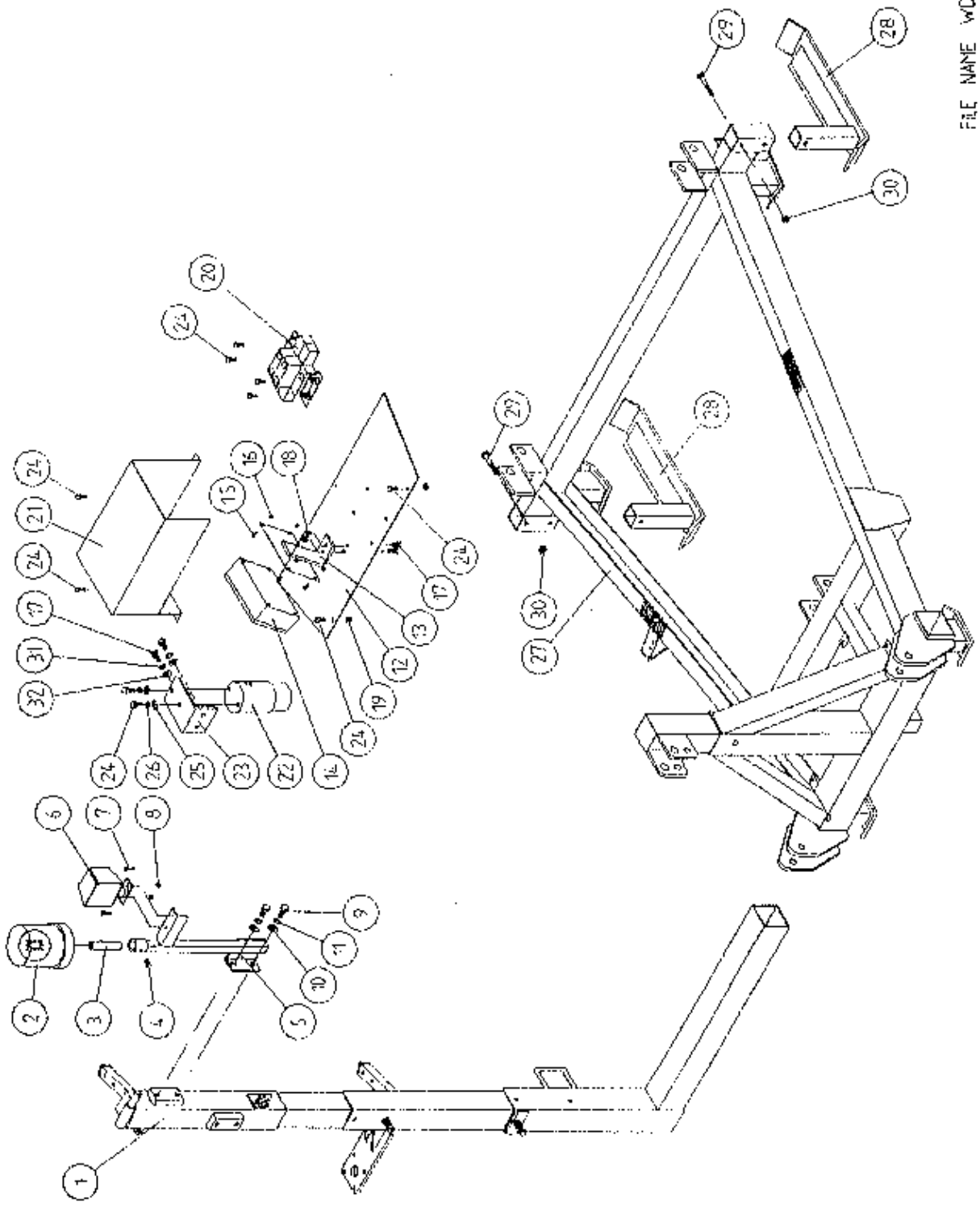
3

22

~

35.	4mm "R" CLIP	1	Z36-02
36.	BISSEJ, PIN (110mm LONG)	1	WD60-861
37.	HYDRAULIC RAM	1	Z01-01-AW2S
38.	M12 HEX HD. SET X 50mm LONG	1	Z26-086S
39.	5/16" UNF HEX NUT	1	Z15-05
40.	1/8" BSP ST. GREASE NIPPLE	1	Z39-60
41.	DISPENSER BRACKET LOSER SUPPORT	1	WD63-DMLH
42.	M16 LOCKNUT	1	Z23-16
43.	1" GB PLASTIC CAP	2	Z32-14
44.	1/2" x 3/16" SPLIT PIN	1	Z03-20-05

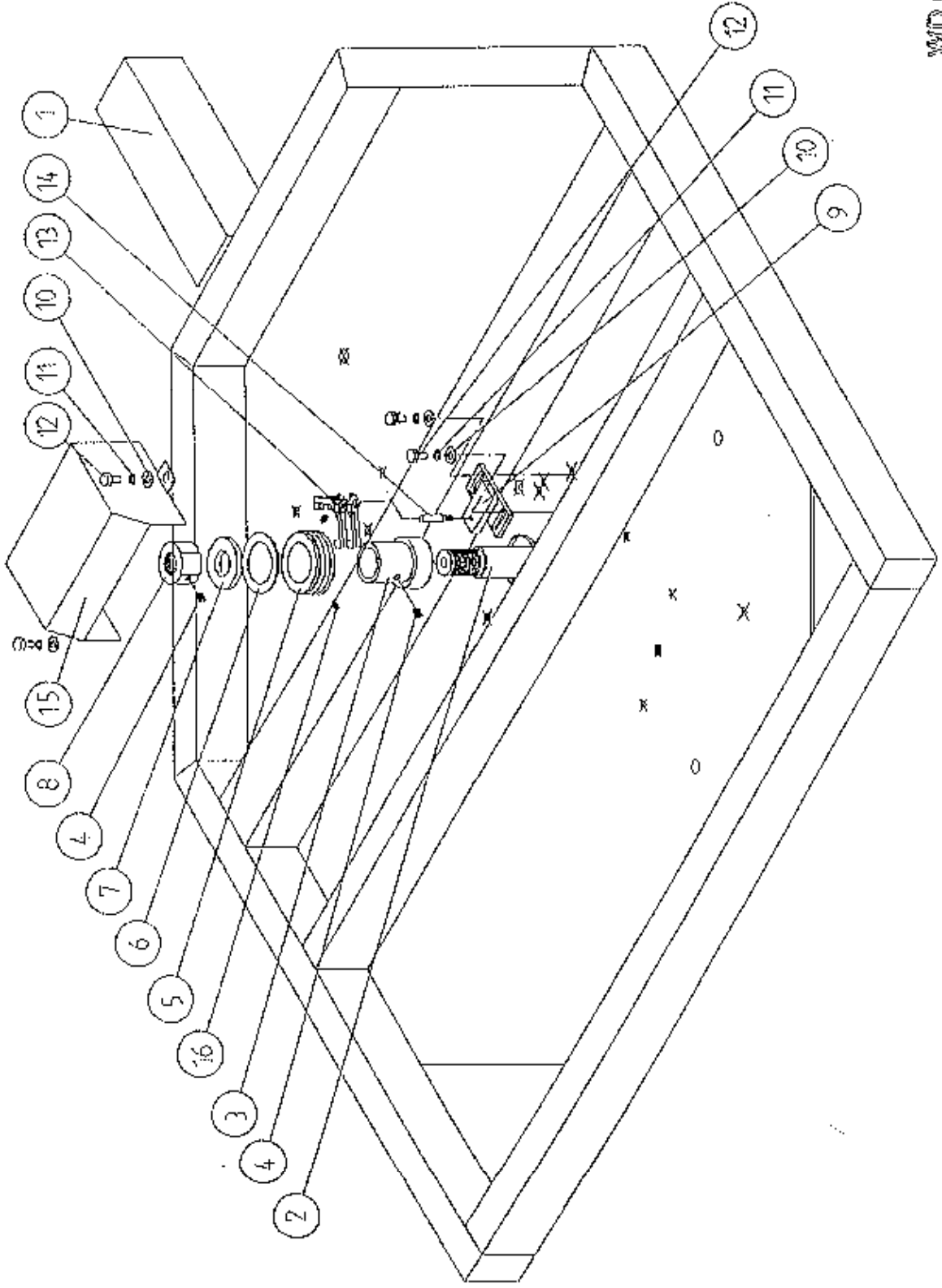
TANCO AUTOWRAP 200 ARC MODEL
SOLENOID VALVE & JUNCTION BOX ASSY



TANCO AUTOWRAP 200 ARC
SOLENOID VALVE & JUNCTION BOX ASSY
PARTS LIST

ITEM NO.	DESCRIPTION	QTY.	PART NO.
1.	FILM MAST ASSY	1	
2.	ROTATING BEACON	1	Z05-18
3.	STEM C/W CABLE	1	Z05-18
4.	M8 X 10MM GRUB SCREW	1	Z28-008
5.	BEACON MOUNTING BRACKET	1	WD63-BMB
6.	RECEIVER	1	X05-18
7.	M6 HEX HD SEPT X 20MM	2	Z26-0205
8.	M6 LOCKNUT	2	Z23-06
9.	M12 HEX HD BOLT X 30MM	2	Z26-0825
10.	12MM DIA FLAT WASHER	2	Z12-02-12
11.	12MM DIA SPRING WASHER	2	Z12-02-12
12.	SOLENOID VALVE MOUNTING PLATE	1	WD63-1027
13.	JUNCTION BOX MOUNTING BRACKET	1	WD63-1BM
14.	JUNCTION BOX	1	ZD6-1B2
15.	M4 ALLEN HD SOCKET SCREW X 16MM	4	Z26-002
16.	M4 LOCKNUT	4	Z23-04
17.	M10 HPX HD SEPT X 25MM	2	Z26S-061
18.	18MM DIA FLAT WASHER	2	Z10-02-10
19.	M8 LOCKNUT	10	Z23-08
20.	2 BANK SOLENOID VALVE	1	Z01-03-10 AZ
21.	VALVE & JUNCTION BOX COVER	1	WD63-UC
22.	FILTER	1	Z01-24-08
23.	FILTER MOUNTING BRACKET	1	WD63-1053
24.	M8 HEX HD SEPT X R5 MM	10	Z26-040S
25.	8MM DIA FLAT WASHER	2	Z10-02-08
26.	8MM DIA SPRING WASHER	2	Z12-02-08
27.	3PT LINKAGE FRAME	1	WD62S-MF
28.	STABILIZING LEG ASSY.	2	WD63-SLM
29.	M12 HEX HD BOLT X 80MM	2	Z26-0901B
30.	M12 LOCKNUTS	2	Z23-12
31.	10MM DIA SPRING WASHER	2	Z12-02-00

TANCO AUTOWRAP - CUT AND START UNIT (1993)
 SLIP RING ASSEMBLY



TANCO AUTOWRAP CUT AND START UNIT (1993)

SLIP RING ASSY.

PARTS LIST

<u>ITEM NO.</u>	<u>DESCRIPTION</u>	<u>QTY.</u>	<u>PART NO.</u>
1.	UNDERSIDE OF TIPPING FRAME	1	
2.	TURNTABLE ASSEMBLY	1	
3.	SLIP RING MOUNTING SLEEVE	1	WD60-825
4.	M8 GRUB SCREW	2	Z28-006
5.	SLIP RING ASSY.	1	Z0605-308
6.	INSULATING RING	1	Z0605-350
7.	LOCKING COLLAR	1	WD60-770
8.	1 1/4" UNC HEX NUT	1	Z18-300
9.	SLIP RING MOUNTING BRACKET ASSY.	1	WD605-SRMB
10.	10mm DIA FLAT WASHER 1" O.D.	4	Z11-02-101
11.	10mm SPRING WASHER	4	Z12-02-10
12.	M10 HEX HD SET x 20mm	4	Z26-060S
13.	BRUSHES	2	Z0605-306
14.	INSULATOR SLEEVE	1	Z0605-304
15.	SLIP RING GUARD ASSY	1	WD605-SRG
16.	M5 GRUB SCREW	2	Z28-005

TANKO AUTOWRAP CUT AND START
 SENSOR MOUNTING BRACKET
 MAGNET MOUNTING BRACKET.

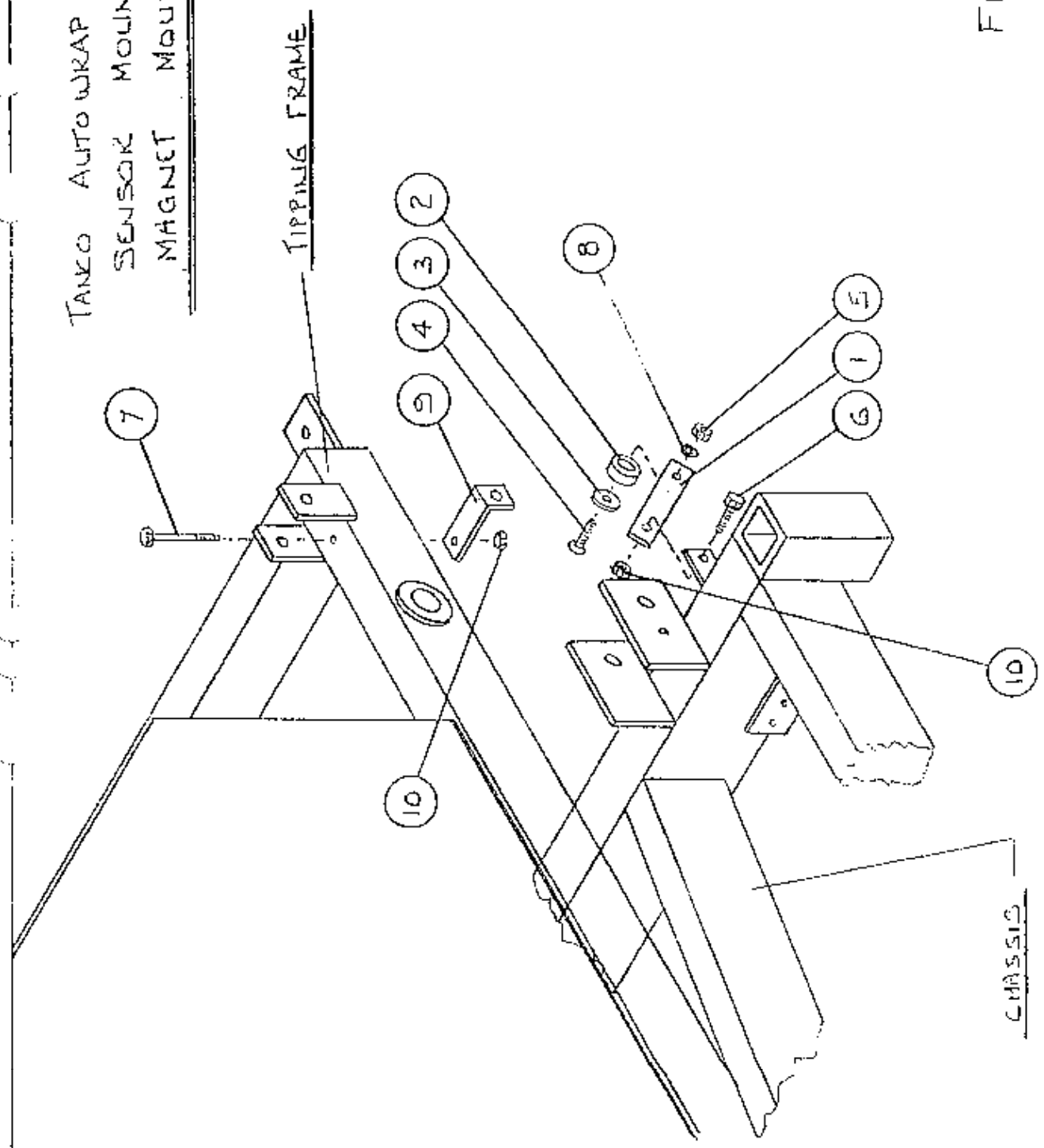


FIG. 6

TANKO © 1989

TANCO AUTOWRAP 1993

BRAKE ARRANGEMENT FOR INDEXING SHAFT

PARTS LIST

<u>ITEM NO.</u>	<u>DESCRIPTION</u>	<u>QTY.</u>	<u>PART NO.</u>
1.	CAM FOLLOWER MOUNTING BRACKET (UPPER)	1	WD60-CFMB
2.	CAM FOLLOWER MOUNTING BRACKET (LOWER)	1	WD60-804
3.	CALIPER DISC BRAKE UNIT	1	Z49-92
4.	BALL BEARING (6301)	1	Z06-43
5.	RUBBER BUFFER 50mm DIA x 30 LONG TYPE A 57 SHORE	2	Z40-21
6.	M10 HEX NUTS	6	Z18-10
7.	10mm DIA SPRING WASHERS	6	Z12-02-10
8.	M10 HEX HD SET x 40 LONG	2	Z26-064S
9.	TENSION SPRING	1	Z07-05
10.	EYE BOLT (M8)	1	WD60-EB
11.	M8 HEX NUTS	2	Z18-08
12.	M12 LOCKNUT	1	Z23-12
13.	SPROCKET/SHAFT ASSY	1	WD60-SPR
14.	5/16" UNF THREADED BAR x 90mm LONG	1	WD60-806
15.	5/16" UNF CLEVIS C/W PIN & CLIP	2	Z49-33
16.	5/16" UNF HEX NUT	2	Z15-05
17.	TURN TABLE	1	
18.	M12 HEX HD. SETS x 40mm LONG	1	Z26-0845
19.	12mm DIA FLAT WASHER	2	Z11-02-12
20.	10mm DIA FLAT WASHER	7	Z11-02-10
21.	3/8" UNF HEX HD. BOLT x 3" LONG	2	Z318-102
22.	3/8" UNF LOCK NUT	2	Z15-06
23.	SPACER 1/2" O.D. x 13/32" I.D. x 1 1/2" LONG	2	
24.	SPACER 1/2" O.D. x 13/32" I.D. x 1/2" LONG	2	
25.	Clamping Plate		WD60-836

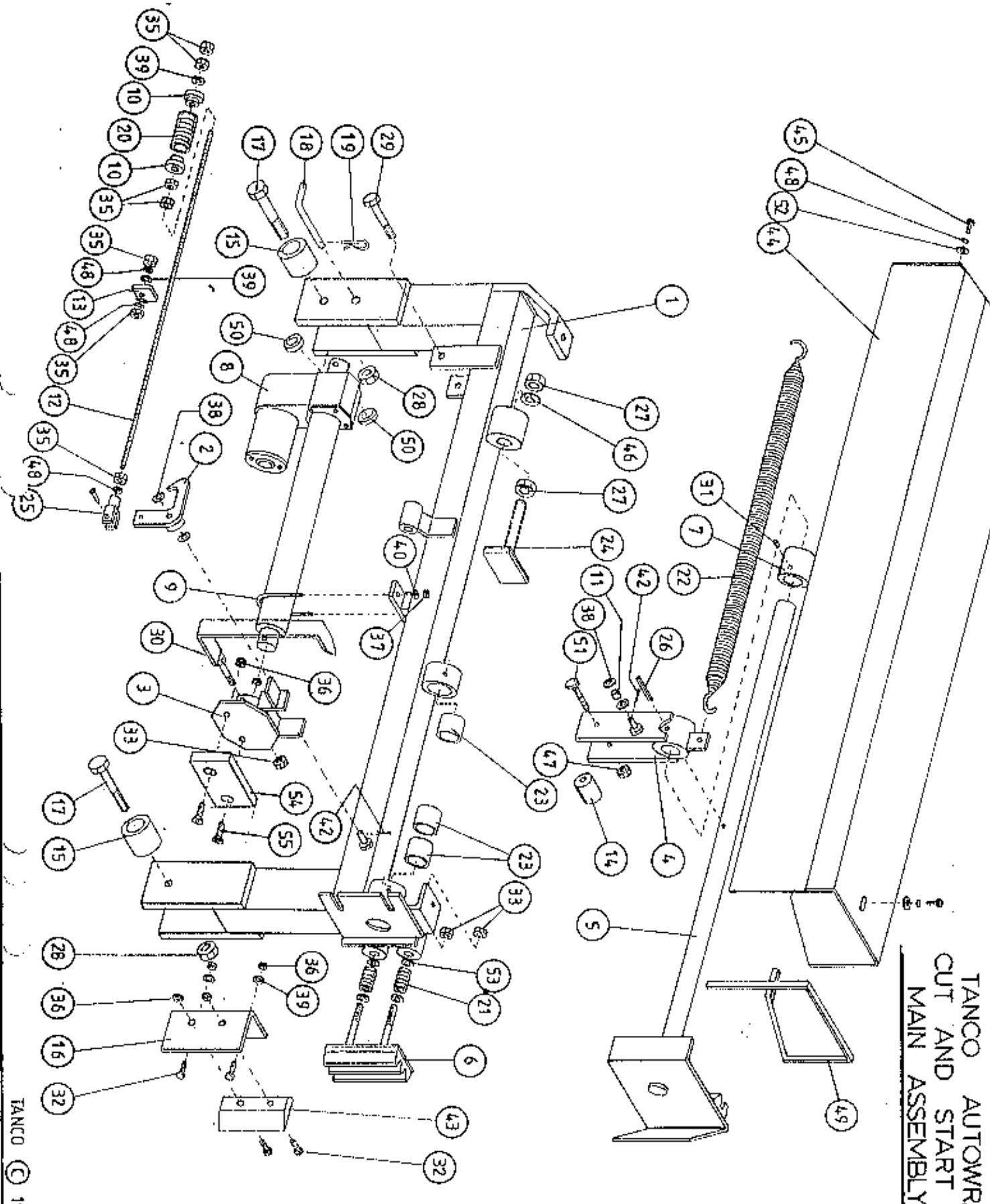
TANCO AUTOWRAP CUT AND START UNIT 1993

SENSOR AND MAGNET MOUNTING BRACKETS

PARTS LIST

<u>ITEM NO.</u>	<u>DESCRIPTION</u>	<u>QTY.</u>	<u>PART NO.</u>
1	MAGNET MOUNTING FLAT	1	WD605-57
2	MAGNET 35mm O.D. x 1.7mm I.D. x 8mm LONG	1	2D605-200
3	8mm DIA FLAT WASHER 1" O.D.	1	Z11-02-081
4	M6 CS'K SET SCREW x 25mm	1	Z13-131
5	M8 LOCKNUT (NYLOCK)	1	Z23-06
6	M8 HEX HD SET x 20mm	1	Z26-0205
7	M6 HEX HD BOLT x 100	1	Z26-057B
8	6mm DIA FLAT WASHER	1	Z11-02-06
9	SENSOR MOUNTING BRACKET	1	WD605-58
10	M8 LOCKNUT (NYLOCK)	2	Z23-08

TANCO AUTOWRAP 22 ARC MODELS
 CUT AND START UNIT
 MAIN ASSEMBLY



TANCO AUTOWRAP A AND ARC MODELS

CUT AND START UNIT (1993)

PARTS LIST

<u>ITEM NO.</u>	<u>DESCRIPTION</u>	<u>QTY.</u>	<u>PART NO.</u>
1.	MAIN MOUNTING FRAME ASSY.	1	WD605-MF
2.	LATCH ASSY.	1	WD605-LA
3.	PUSH PLATE ASSY.	1	WD605-PP
4.	GUIDE ASSY.	1	WD605-GD
5.	PLUNGER ASSY.	1	WD605-PL
6.	FILM GRIPPER ASSY.	1	WD605-FG
7.	PLUNGER END CAP	1	WD605-90
8.	WARNER LINEAR ACTUATOR D11 1085 08	1	Z0605-510
9.	"U" BOLT	1	WD605-45
10.	STEPPED COLLAR	2	WD605-46
11.	SLEEVE 1/2" DIA O.D. x 13/32" DIA I.D.	1	WD605-47
12.	THREADED ROUND 5/16" UNF	1	WD605-48
13.	TRIGGER	1	WD605-50
14.	COLLAR 1" DIA BRIGHT RD. x 41.5mm LONG	1	WD605-51
15.	SPACER	1	WD605-100
16.	BLADE GUARD/MOUNTING BRACKET	1	WD605-105
17.	M12 HEX HD BOLT x 80mm LONG	2	Z26-0901B
18.	BISSEL PIN	1	Z03-22-AW100
19.	4mm "R" CLIP	1	Z36-02
20.	SPRING 16mm O.D. x 1.5mm WIRE x 48mm LONG	1	Z07-34
21.	SPRING 1.09" O.D. x 0.092" WIRE x 1.54" LONG	2	Z07-44
22.	SPRING 1.125" O.D. x 0.125" WIRE x 330mm	1	Z07-46
23.	OILITE OIL RETAINING BUSH 1 1/8" O.D. x 3/4" I.D. x 1" L.	3	Z06-105
24.	RUBBER BUFFER ASSY.	1	WD605-BA
25.	CLEVIS C/W PIN	1	Z49-33
26.	1 1/2" x 1/4" DIA TENSION PIN	1	Z03-20-07
27.	M16 HEX NUTS	2	Z18-16
28.	M12 LOCKNUTS	2	Z23-12
29.	M12 HEX HD BOLT x 65mm	1	Z26-0082B
30.	INDICATOR ASSY.	1	WD605-PR
31.	M8 GRUB SCREW	1	Z28-008
32.	M8 HEX HD SET x 25mm	4	Z26-0255
33.	M12 BINX LOCKNUT	4	Z23-12BX

2

2

22

2

TANCO AUTOWRAP A AND ARC MODELS
CUT AND START UNIT (1993)

PARTS LIST

<u>ITEM NO.</u>	<u>DESCRIPTION</u>	<u>QTY.</u>	<u>PART NO.</u>
35.	5/16" UNF HEX NUT	7	Z15-05
36.	M8 LOCKNUT	9	Z18-08
37.	M6 LOCKNUT (NYLOCK)	2	Z23-16
38.	10mm DIA FLAT WASHER	10	Z11-02-10
39.	8mm DIA FLAT WASHER	5	Z11-02-08
40.	6mm DIA FLAT WASHER	2	Z11-02-06
42.	3mm DIA SPLIT PIN	2	Z03-21-02
43.	BLADE	1	WD605-104
44.	MAIN GUARD	1	WD605-MG
45.	M8 HEX HD SET x 20mm LONG	2	Z26-020S
46.	10mm DIA SPRING WASHER	2	Z12-02-10
47.			
48.	8mm DIA SPRING WASHER	9	Z12-02-08
49.	EDGING STRIP	1	Z44-12
50.	SPACER 1" O.D. x 1/2" I.D. x 6mm LONG	2	WD605-65
51.	M10 HEX HD SET x 20mm	2	Z26-060S
52.	8mm DIA FLAT WASHER 1" O.D.	4	Z11-02-081
53.	25MM O.D. x 12MM I.D. FILM GRIP WASHER	1	Z11-02-12FG
54.	PACKER	1	WD605-133
55.	H8 X 40 COUNTER SUNK BOLT	2	Z13-5-08X40